

The Centre's vision highlights the pursuit of excellence:

*World-class local government to meet the emerging challenges of 21st century Australia.*

*At the end of its initial five years, the Centre will have brought about enduring improvements in local government's capacity and performance.*



*Participants at the ANZSOG-ACELG Excellence in Local Government Leadership Program*

### Background to the Centre of Excellence

At the Australian Council of Local Government (ACLG) meeting in November 2008, the Prime Minister announced funding support for a Centre of Excellence to showcase innovation and best practice across local government and encourage the adoption of innovative practices and solutions. Following a public expression of interest process, the Australian Centre of Excellence for Local Government (ACELG) was established in mid-2009.

### About the Centre and its Partners

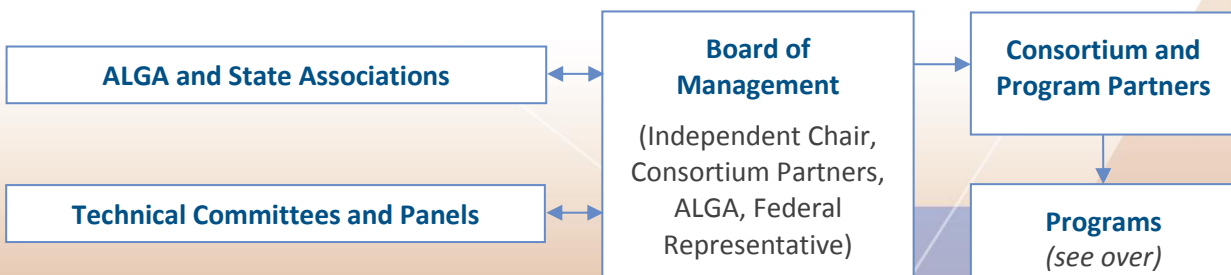
ACELG is a unique consortium of universities and professional bodies that have a strong commitment to the advancement of local government. The consortium is based at the University of Technology, Sydney (UTS) and includes the UTS Centre for Local Government (UTS:CLG), the University of Canberra, the Australia and New Zealand School of Government (ANZSOG), Local Government Managers Australia (LGMA) and the Institute of Public Works Engineering Australia (IPWEA). In addition, there are program partners to provide support in specialist areas and to extend the Centre's national reach: Charles Darwin University (CDU) and Edith Cowan University (ECU).

### Operating Environment and Challenges

There are currently around 560 local governments across Australia, ranging from small remote communities and rural shires to large, densely populated metropolitan cities. To contribute effectively to national agendas and to address its own sector challenges, local government needs to improve the way it works and to position itself effectively in a changing federal system. There is a need for reform emerging from local government's own efforts to respond to the challenges it faces. The Centre is pursuing excellence by pushing the boundaries of knowledge and practice.

### Governance Arrangements

ACELG has a Board of Management comprising an independent chair and representatives of the consortium, the Australian Local Government Association (ALGA) and the Department of Infrastructure and Regional Development. There are also strong reporting channels and accountability links to Local Government Associations.



## Program Delivery

ACELG's activities are grouped into six program areas. Major activities include:

<b>Research and Policy Foresight</b>	
<ul style="list-style-type: none"><li>A national research and policy development program based on key sector priorities</li><li>Seminars and roundtables on key policy issues</li></ul>	<b>Contact:</b> Stefanie Pillora, Program Manager, Research stefanie.pillora@acelg.org.au
<b>Innovation and Best Practice</b>	
<ul style="list-style-type: none"><li><i>ACELG Community</i> interactive website comprising an open-submission blog called 'The Town Crier' and Knowledge Exchange of links and resources</li><li>Research into and showcased studies of successful models and examples of better practice in local government</li></ul>	<b>Contact:</b> Melissa Gibbs Deputy Director ACELG melissa.gibbs@acelg.org.au  <b>Contact:</b> Professor Mark Evans University of Canberra mark.evans@canberra.edu.au
<b>Governance and Strategic Leadership</b>	
<ul style="list-style-type: none"><li>A high-level Excellence in Local Government Leadership Program (ELGLP)</li><li>Models for enhanced strategic leadership and local governance</li></ul>	<b>Contact:</b> Jane Durlacher, ANZSOG J.Durlacher@anzsog.edu.au  <b>Contact:</b> Tim Robinson, UTS:CLG tim.robinson@uts.edu.au
<b>Organisation Capacity Building</b>	
<ul style="list-style-type: none"><li>Guidelines on asset management for small communities</li><li>A national framework to promote improved asset management and long-term financial planning</li><li>National minimum data sets for key aspects of local government</li></ul>	<b>Contact:</b> Chris Champion, CEO, IPWEA cchampion@ipwea.org.au
<b>Rural-Remote and Indigenous Local Government</b>	
<ul style="list-style-type: none"><li>A national strategy to address the specific capacity-building needs of small rural-remote and Indigenous local governments</li></ul>	<b>Contact:</b> Melissa Gibbs Deputy Director, ACELG melissa.gibbs@acelg.org.au
<b>Workforce Development</b>	
<ul style="list-style-type: none"><li>An annual Local Government Skills Forum</li><li>A Workforce Development Blueprint</li><li>A review of education and training to identify gaps and opportunities for national networking</li><li>Development of new training programs</li></ul>	<b>Contact:</b> Angela Zivkovic, ACELG angela.zivkovic@acelg.org.au  <b>Contact:</b> Tim Robinson, UTS:CLG tim.robinson@uts.edu.au

April 2014

